

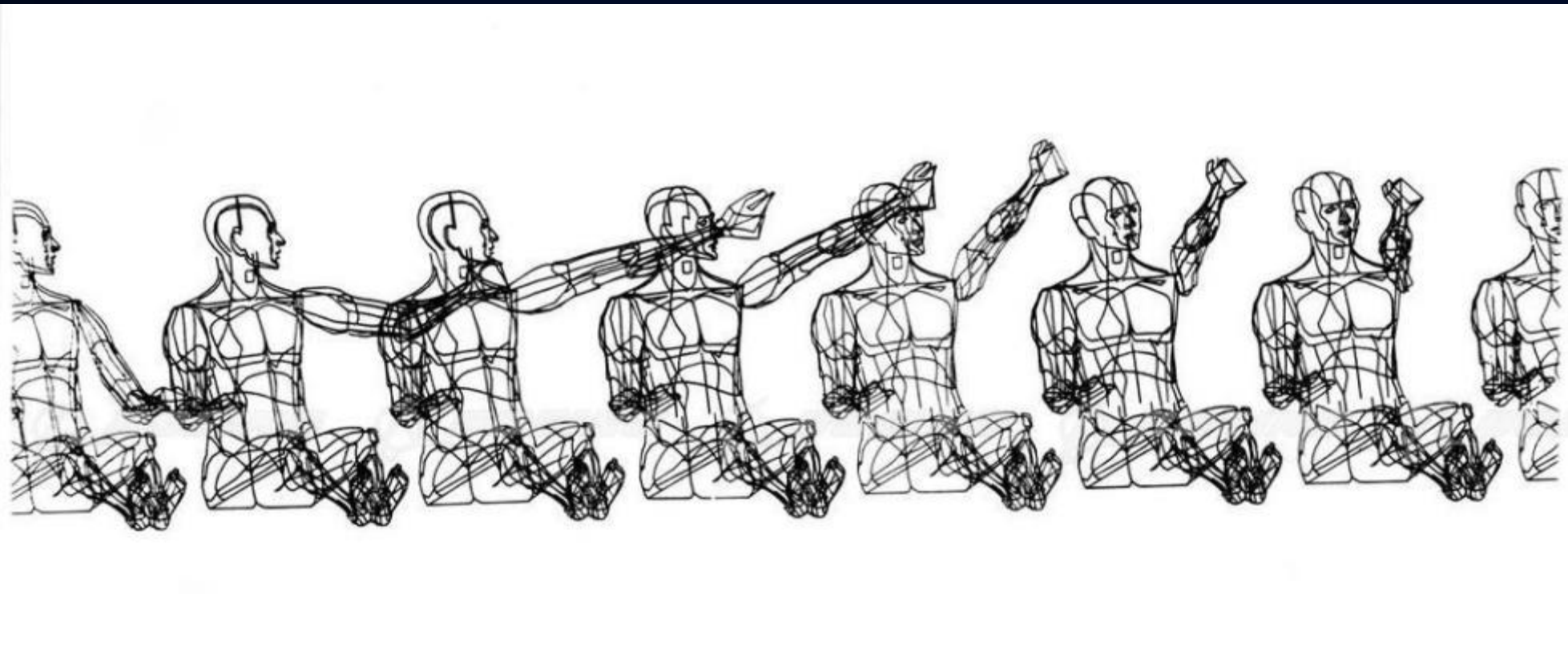


# Digital Reality Check

Breaking the time cycle of digital technology in aerospace

**Adam Marshall | Sr. Director & Chief Engineer**

Commercial Airplanes Digital Transformation | September 19, 2023



Commands: Workpad Range Copy Move Data File Print Environment System Quit

Workpad: Global Insert Delete Mark Width Erase Titles Status

R	A	B	C	D	E	F	G	H	I
1	987	654	432						
2	234	456	685						
3	853	554	432						
4	433	333	233						
5	544	564	432						
6	55	53	645						
7	400	466	707						
8									
9									
10									
11									
12									
13									
14									
15									
16									
17									
18									
19									
20									

## VIRTUAL FIXTURES

(A.R. system - 1992)

Wright Patterson AFB













“ The problem ... is that the aerospace supplier industry, though it provides parts for awesome and innovative products, **is not attractive** to young people because ... it is **technologically backward**.

... young people coming into the industry are appalled to find they must fill out paper records instead of having everything digitized... “

The Seattle Times 9/17/2023

# Why Digital Transformation

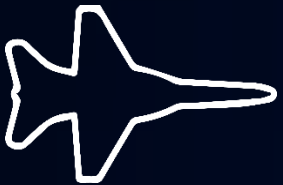
FOR...

<b><i>...the Boeing team</i></b>	Access to authoritative data for faster, better decisions; attract, recruit, retain the next generation workforce	
<b><i>...our Customers</i></b>	Operational efficiency enabled by digital twins	
<b><i>...Product Development</i></b>	Engineering quality driving schedule assurance and certification confidence	
<b><i>...the Production System</i></b>	Flatten the disruption curve	

# Full Digital Engineering Lifecycle

Digital Thread – Single Source of Truth Data

**Digital Requirements**  
“As Specified”



**Model-Based Systems Engineering**  
Concept / Requirements

**Digital System Model**  
“As Designed”



**Model-Based Design**  
Design / Analysis

**Digital Manufacturing**  
“As Built”



**Model-Based Production System**  
Production System Design

**Digital Test**  
“As Verified”



**Model-Based Verification**  
Certification / Test

**Digital Twin**  
“As Maintained”



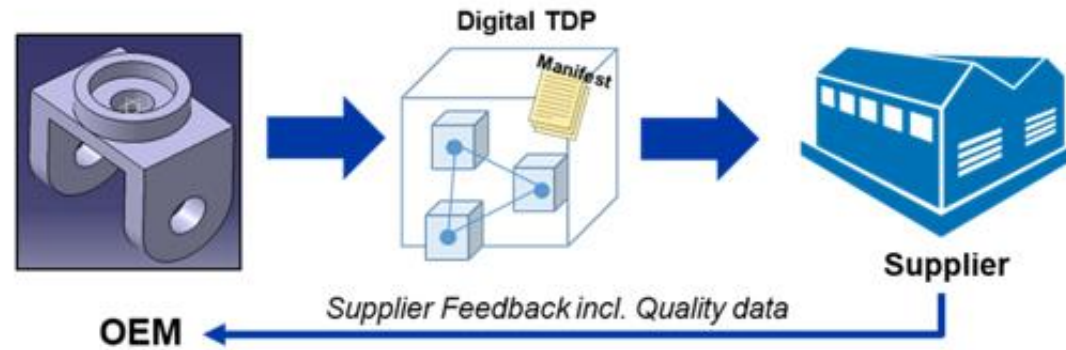
**Model-Based Support & Services**  
Maintain & Enhance



### LEVEL 1 EXCHANGE

#### Unidirectional Exchange of TDP – *build to model*

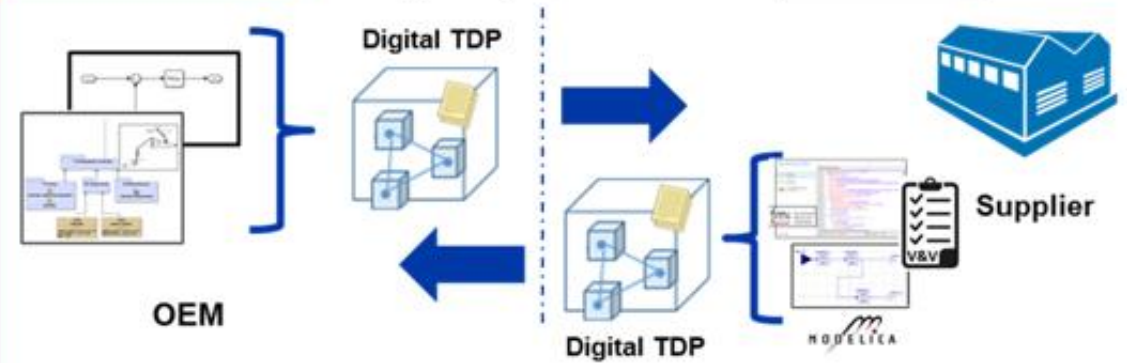
Unidirectional exchange of Technical Data Packages (TDP) from OEM to Supplier. Supplier feedback will be requested and may contain model artifacts.



### LEVEL 2 INTEROPERABILITY

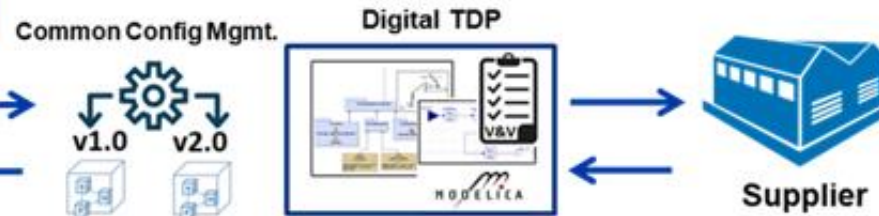
#### Bidirectional Exchange of TDP – *build to requirements*

Bi-directional exchange of TDP. OEM provides specification models. OEM and supplier import, review and return different versions of the TDP.



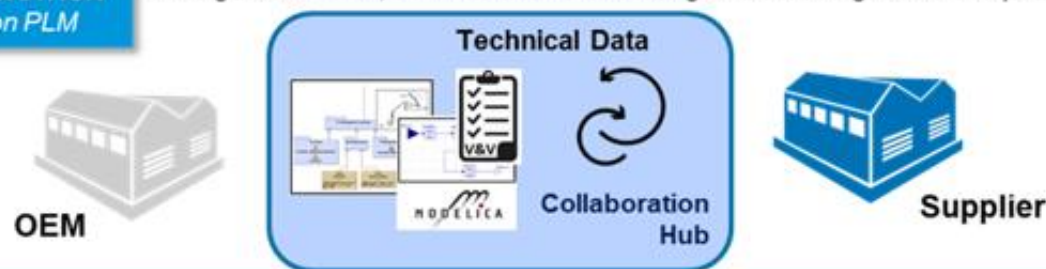
### LEVEL 3A COLLABORATION based on TDP

Co-development where OEM and supplier import, review and return a shared version of the TDP, under common Configuration Management (CM).



### LEVEL 3B COLLABORATION based on PLM

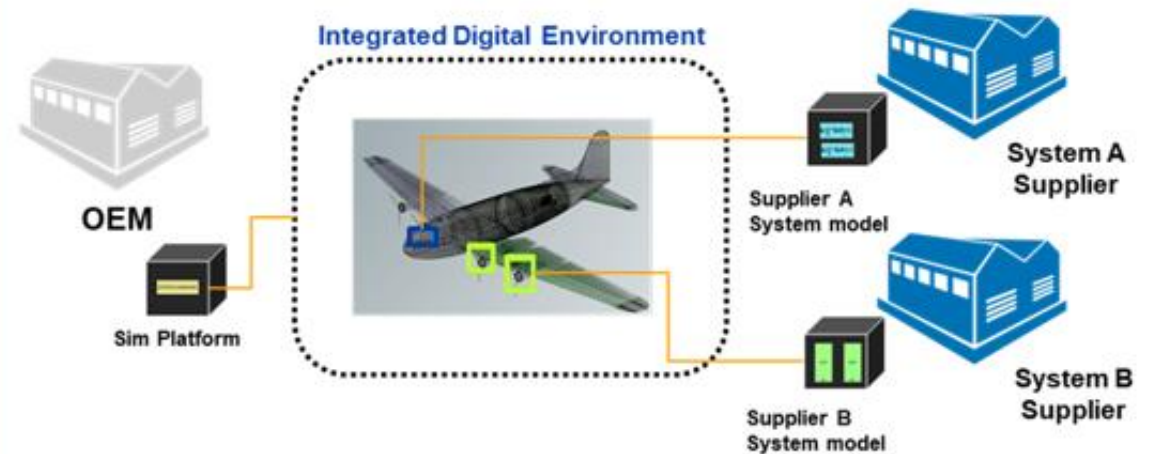
Co-development in a shared "collaboration vault" where TDP content is managed. Common, PLM-enforced data Configuration Management is required.



### LEVEL 4 DIGITAL INTEGRATION

#### Platform level co-simulation

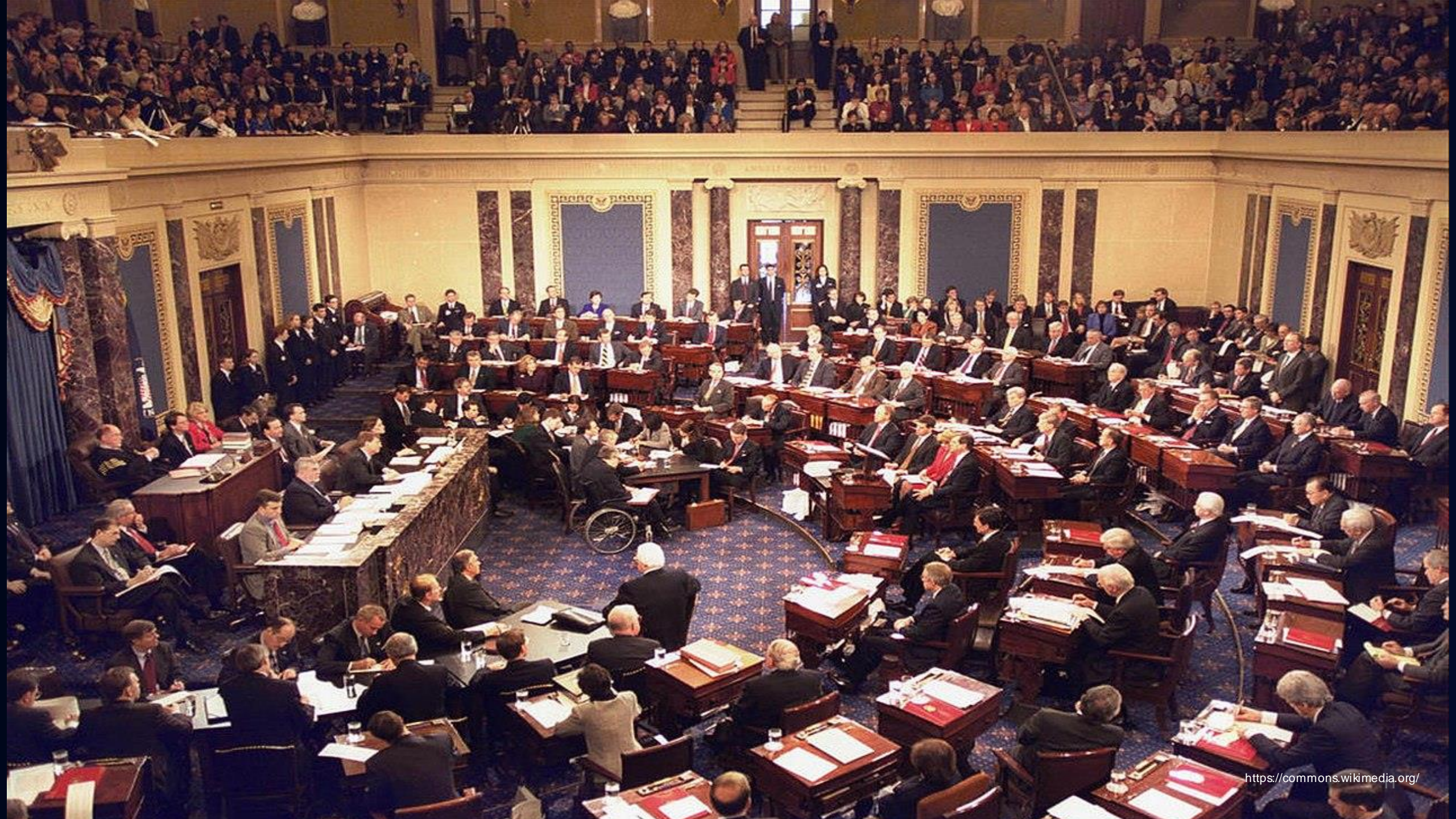
Joint simulation of behavior (executable) models to perform system or platform level integration tests. Used in combination with other Engagement Levels. Multiple variants: real time, distributed, cloud based...





**The model based supply chain; what is reality?**





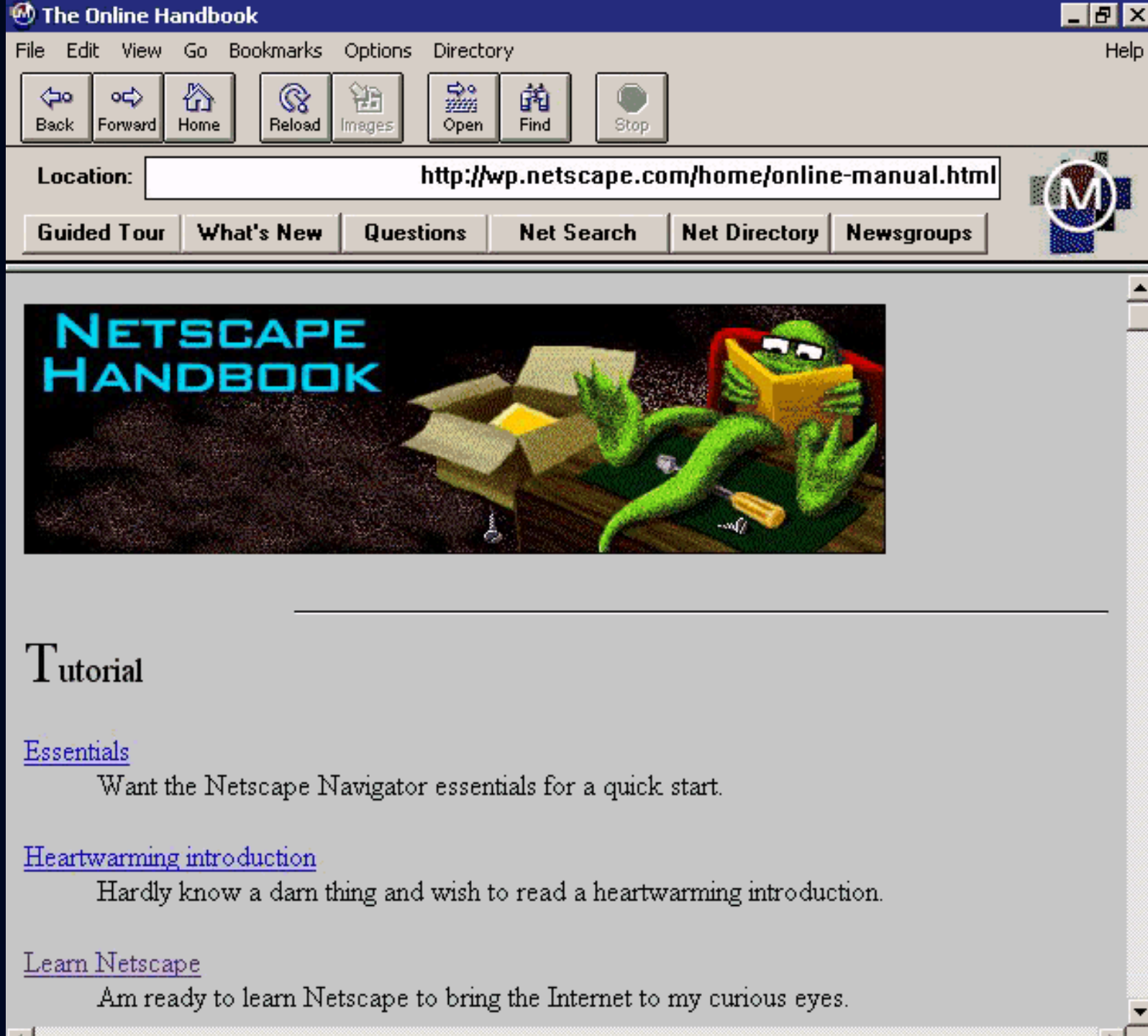




<https://commons.wikimedia.org/>









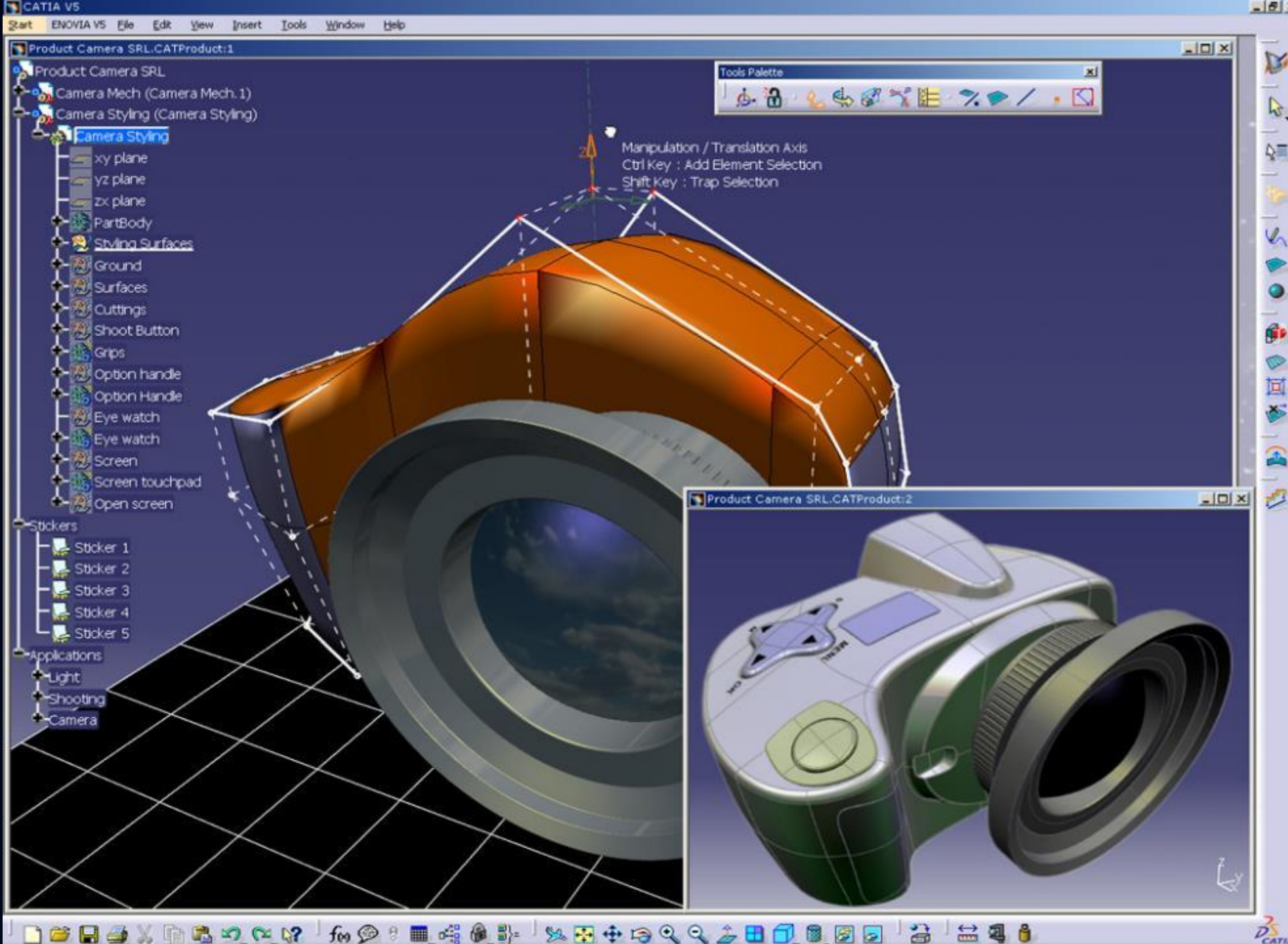






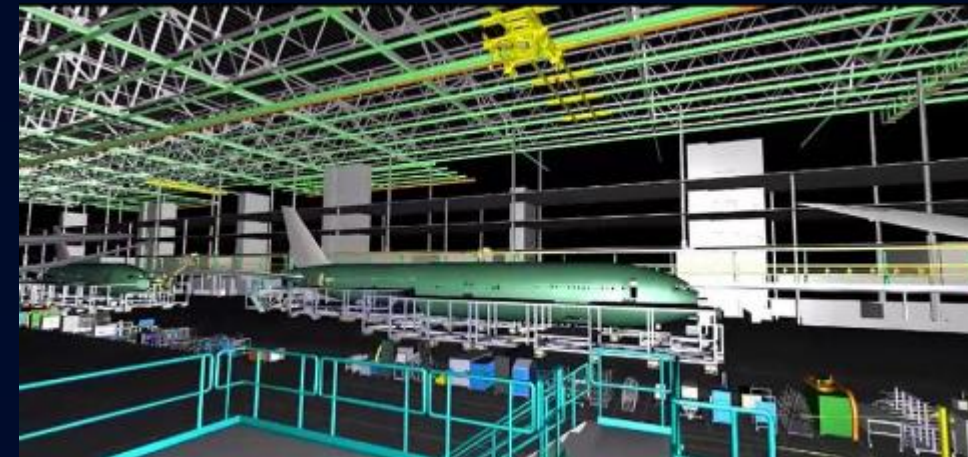






# What is the reality of transformation?

- Clock speed of digital change has become generational; Pace of digital technology outpaces the ability to leverage and integrate
- Focus often is on standards and new products versus legacy data
- Cultural barriers are real; progress is being made but slowly





# Shifting from generational to rapid change

---



## ***Focus on People***

This is being done for our teams... not to them. Build Belief.

## ***Innovate with Legacy Data***

Provide value sooner and leverage existing products

## ***Collaborate***

Across the complete supply chain

## ***Mature Standards***

And adopt them into digital platforms at a faster pace

# Questions?

---

